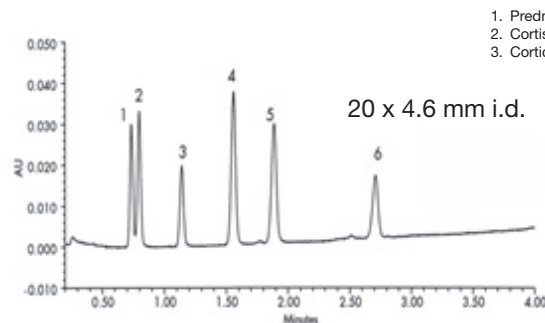


**FAST LC****Pression : 170 bar****Initiez-vous à la :**

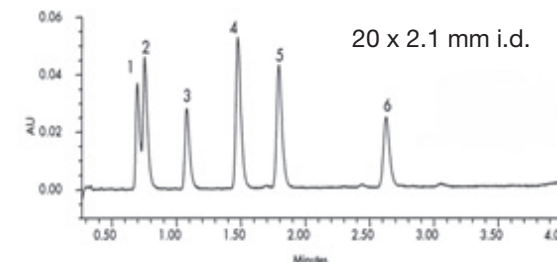
- **FAST LC**  
- **UPLC**

**sans avoir obligatoirement un système UPLC.**

A.I.T en collaboration avec YMC Europe vous propose un fascicule de conseils et de rappels techniques pour bien démarrer.

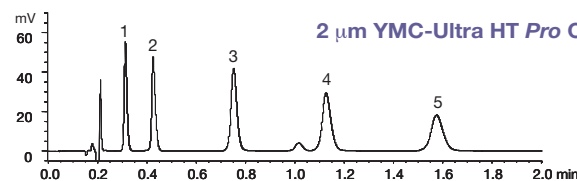
**Steroids\***

1. Prednisolone
2. Cortisone
3. Corticosterone
4. Estradiol
5. Estrone
6. Progesterone

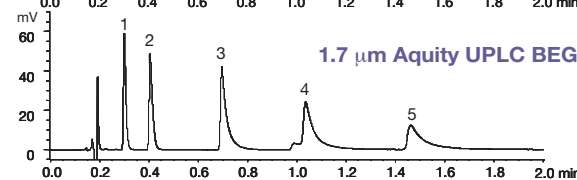


Column: YMC-Pack Pro C18 (3 µm, 12 nm) 20 x 4.6 mm i.d.  
 Eluent: A) water  
 B) acetonitrile  
 Gradient: 20-64% B (0-4 min)  
 Flow rate: 3.0 ml/min  
 Temperature: 30 °C  
 Detection: UV at 220 nm  
 Injection: 10 µl  
 Pressure: 1400 psi (94 bar), 9.4 MPa

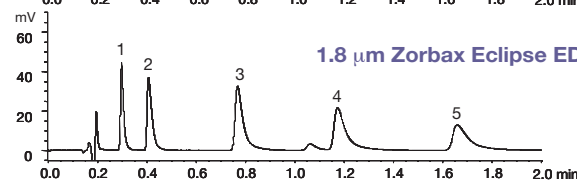
Column: YMC-Pack Pro C18 (3 µm, 12 nm) 20 x 2.1 mm i.d.  
 Eluent: A) water  
 B) acetonitrile  
 Gradient: 20-64% B (0-4 min)  
 Flow rate: 0.6 ml/min  
 Temperature: 30 °C  
 Detection: UV at 220 nm  
 Injection: 5 µl  
 Pressure: 1600 psi (107 bar), 10.7 MPa

**Mettez un Turbo à vos analyses !****UPLC****Pression : 300 bar****Peak performance\*****2 µm YMC-Ultra HT Pro C18, 50 x 2.0 mm i.d.**

**N 5 = 106,000 /m**  
**Tf 5 = 1.07**  
**4470 psi (300 bar), 30 MPa**

**1.7 µm Aquity UPLC BEG C18, 50 x 2.1 mm i.d.**

**N 5 = 89,000 /m**  
**Tf 5 = 3.99**  
**7450 psi (500 bar), 50 MPa**

**1.8 µm Zorbax Eclipse EDB-C18, 50 x 2.1 mm i.d.**

**N 5 = 78,000 /m**  
**Tf 5 = 2.35**  
**5960 psi (400 bar), 40 MPa**

**YMC**  
EUROPE GMBH

SOURCE : COURTESY OF ymc Co., Ltd.

AIT France  
 117 Rue de Stalingrad  
 78800 - HOUILLES

Tél. : 01.34.93.10.80  
 Fax : 01.34.93.45.67  
 aitfrance@club-internet.fr

